

# Let's talk about living with cancer

## About the artist

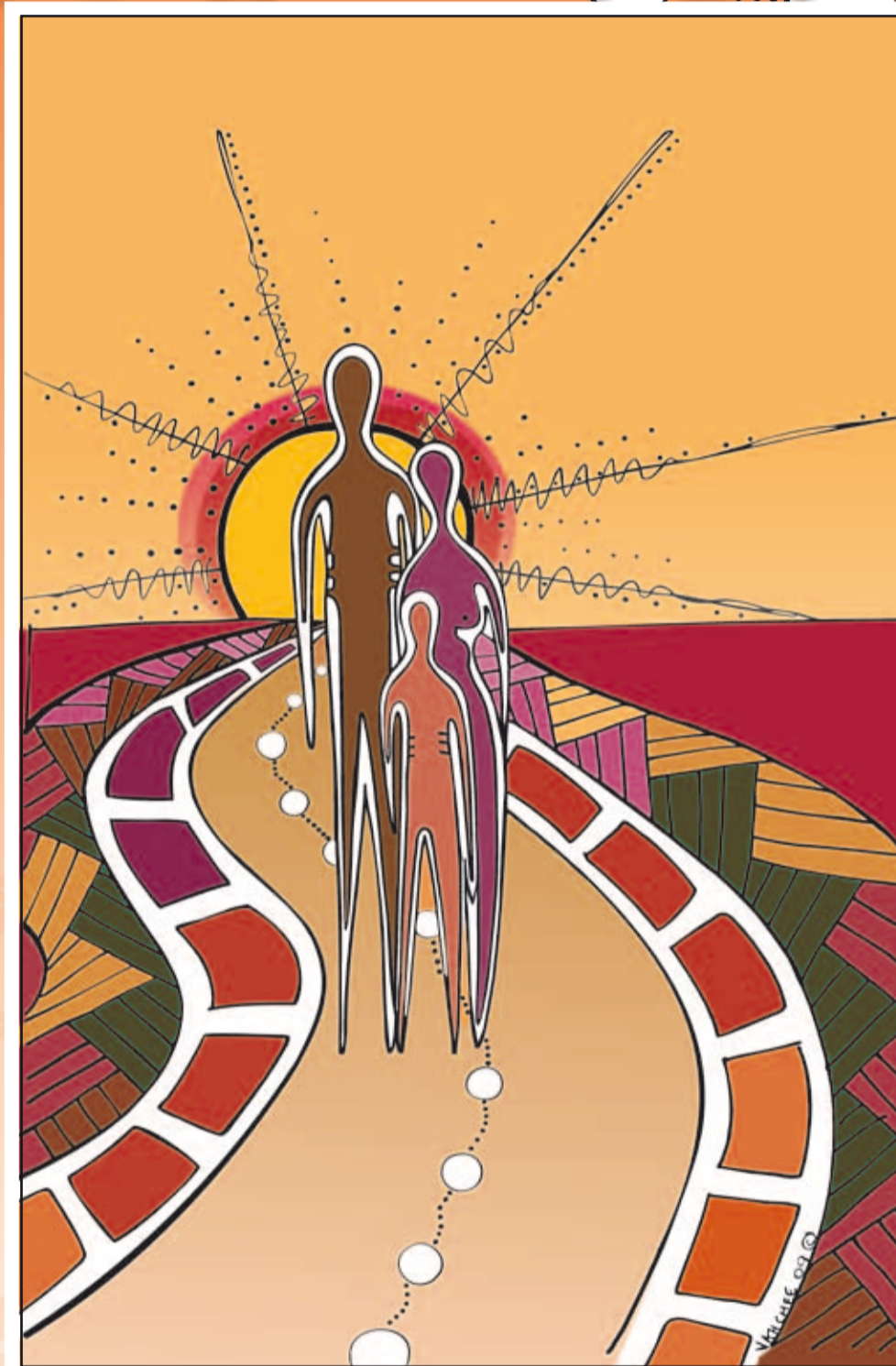
### Valerie Ah Chee

Nyoongar, Southwest region,  
Western Australia

### 'The Path', 2010

The picture shows that men, women, children and families are all affected by cancer. The path they are on is a path walked by many and everyone's journey is different.

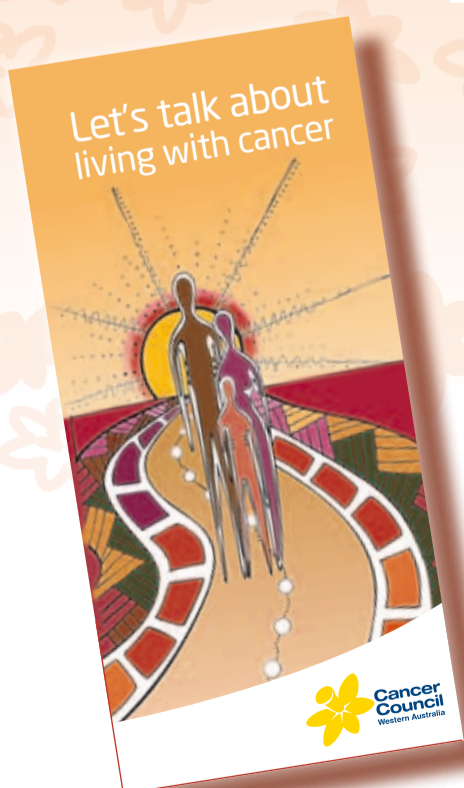
The sun signifies hope and positivity as they battle cancer.



The Aboriginal flag,  
designed by  
Harold Tomas in 1971



The Torres Strait Islander  
flag, designed by  
Bernard Namok in 1992



- **What is cancer?**
- **How is cancer treated?**
- **Myth busters**
- **Where to look for support**
- **Practical tips for people with cancer**
- **Survivor stories**

**Ask for a copy of this brochure. Call the  
Cancer Council WA on (08) 9388 4363  
Monday to Friday, 9 am - 5 pm.**



*Cancer Council WA gratefully acknowledges Cancer Council Queensland  
for allowing us to adapt this resource for use in WA.*